



# *Photographs of Kellogg Switchboard Installations 1955-56*

These photographs and ID card were loaned for scanning by Odis LeVrier,  
House of Telephones, San Angelo, TX

[www.houseoftelephones.com](http://www.houseoftelephones.com)

The Kellogg Communications Systems Department sign is from Mike Neale's  
collection.

Produced by Mike Neale, member of  
Antique Telephone Collectors Association US  
Telephone Collectors International US  
Telecom Heritage Group UK

[www.kelloggtelephone.com](http://www.kelloggtelephone.com)

Adobe document copyright 2006, Mike Neale, Midland, Texas, USA



[www.atcaonline.com](http://www.atcaonline.com)



[www.telephonecollectors.org](http://www.telephonecollectors.org)



[www.thg.org.uk](http://www.thg.org.uk)

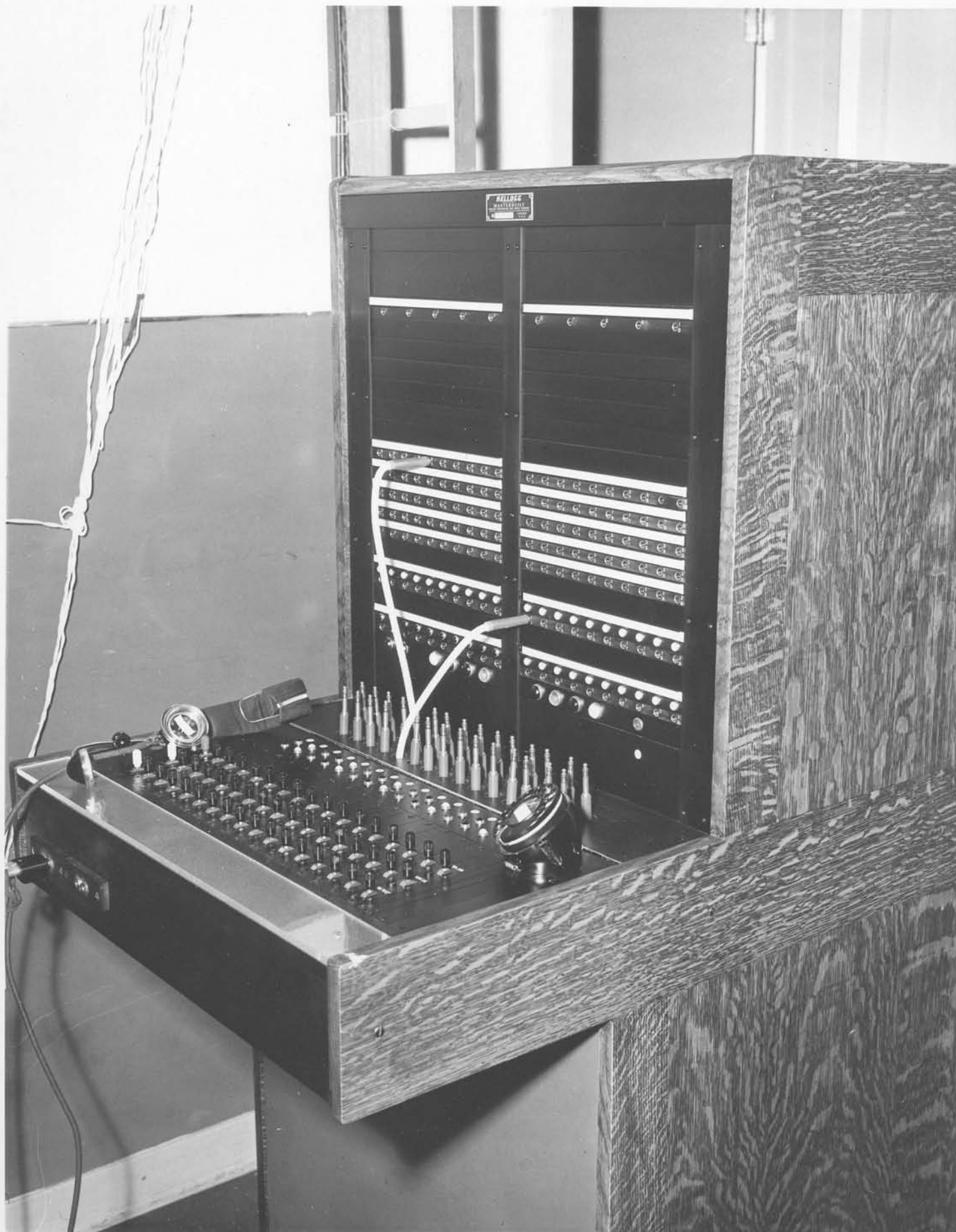


**KELLOGG**

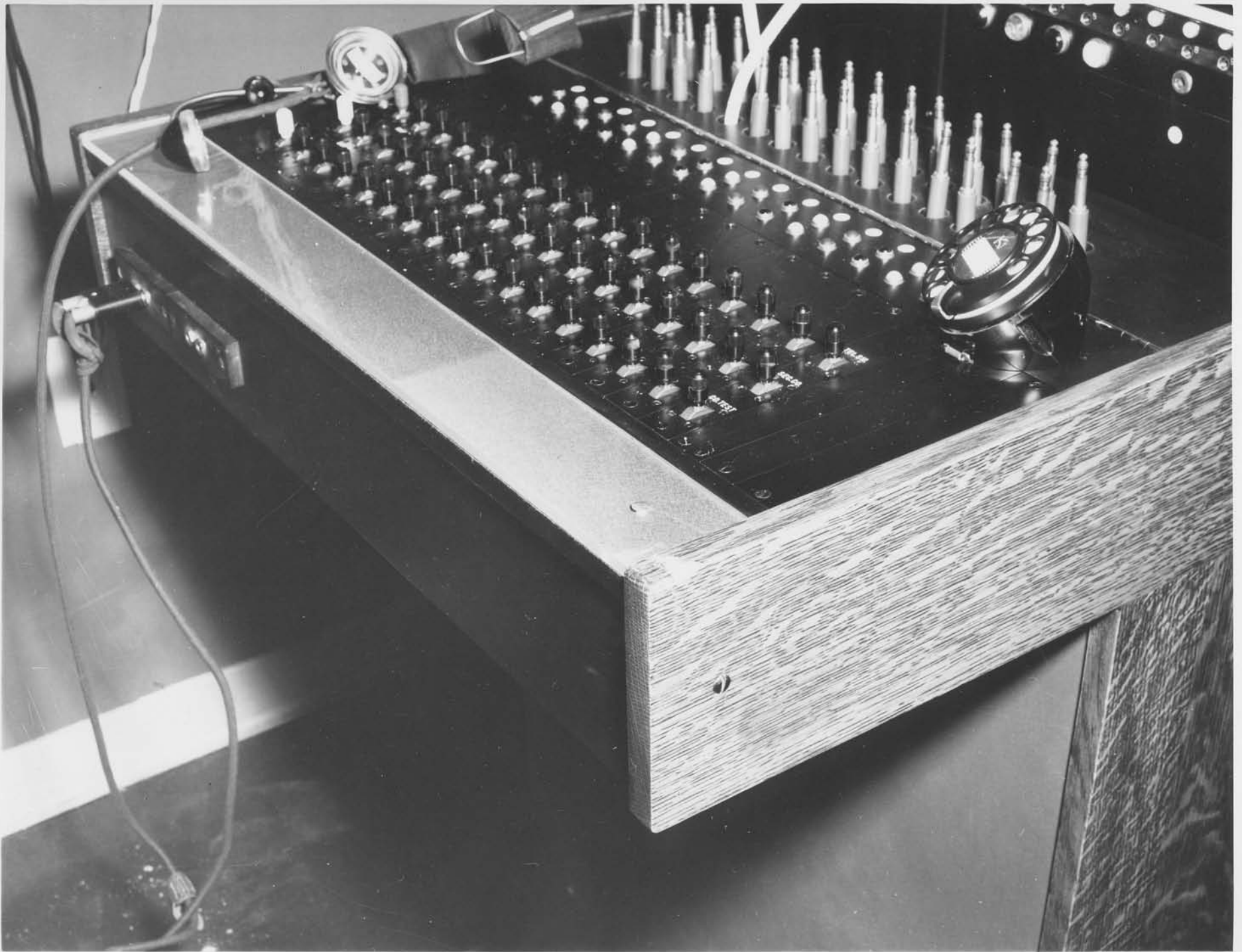
COMMUNICATIONS SYSTEMS  
DEPARTMENT



KELLOGG ATTENDANTS SWITCHBOARD, KELLOGG 7-2 X-BAR,  
EDWARDS AIR FORCE BASE, DOUGLAS AIRCRAFT, CA 1955



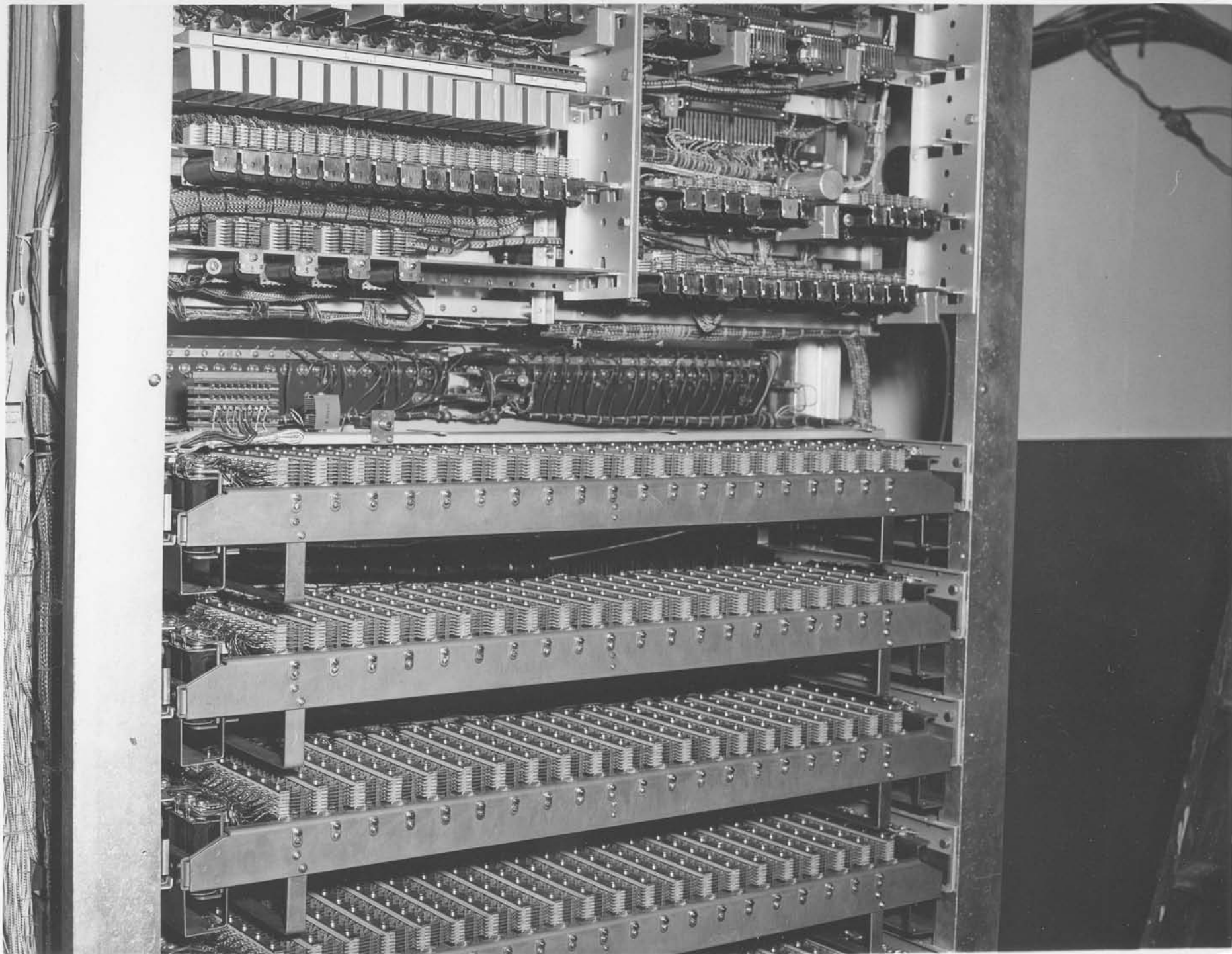
KELLOGG ATTENDANTS SWITCHBOARD, KELLOGG 7-2 X-BAR,  
EDWARDS AIR FORCE BASE, DOUGLAS AIRCRAFT, CA 1955



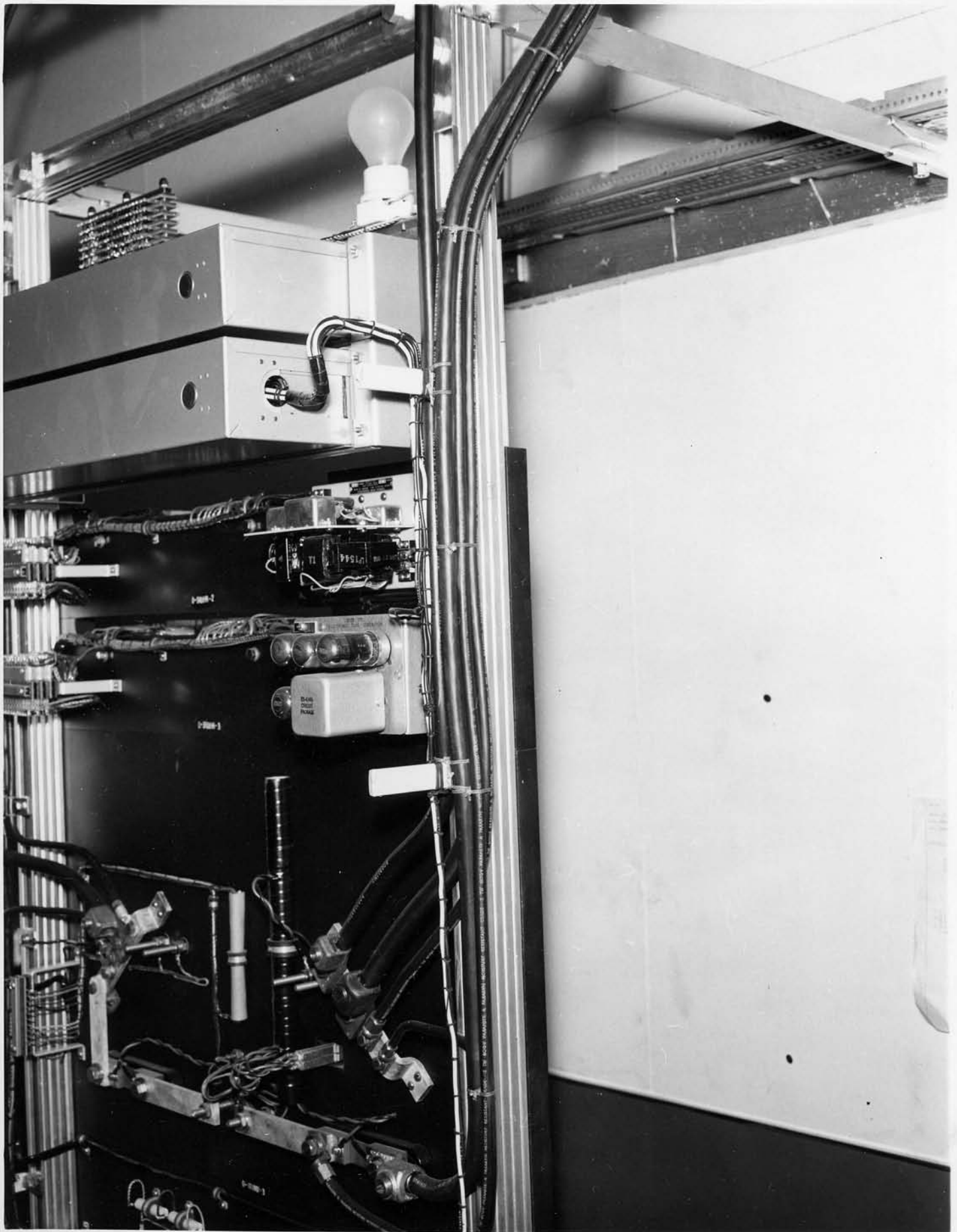
KELLOGG ATTENDANTS SWITCHBOARD, KELLOGG 7-2 X-BAR, EDWARDS AIRFORCE BASE, DOUGLAS AIRCRAFT, CA 1955



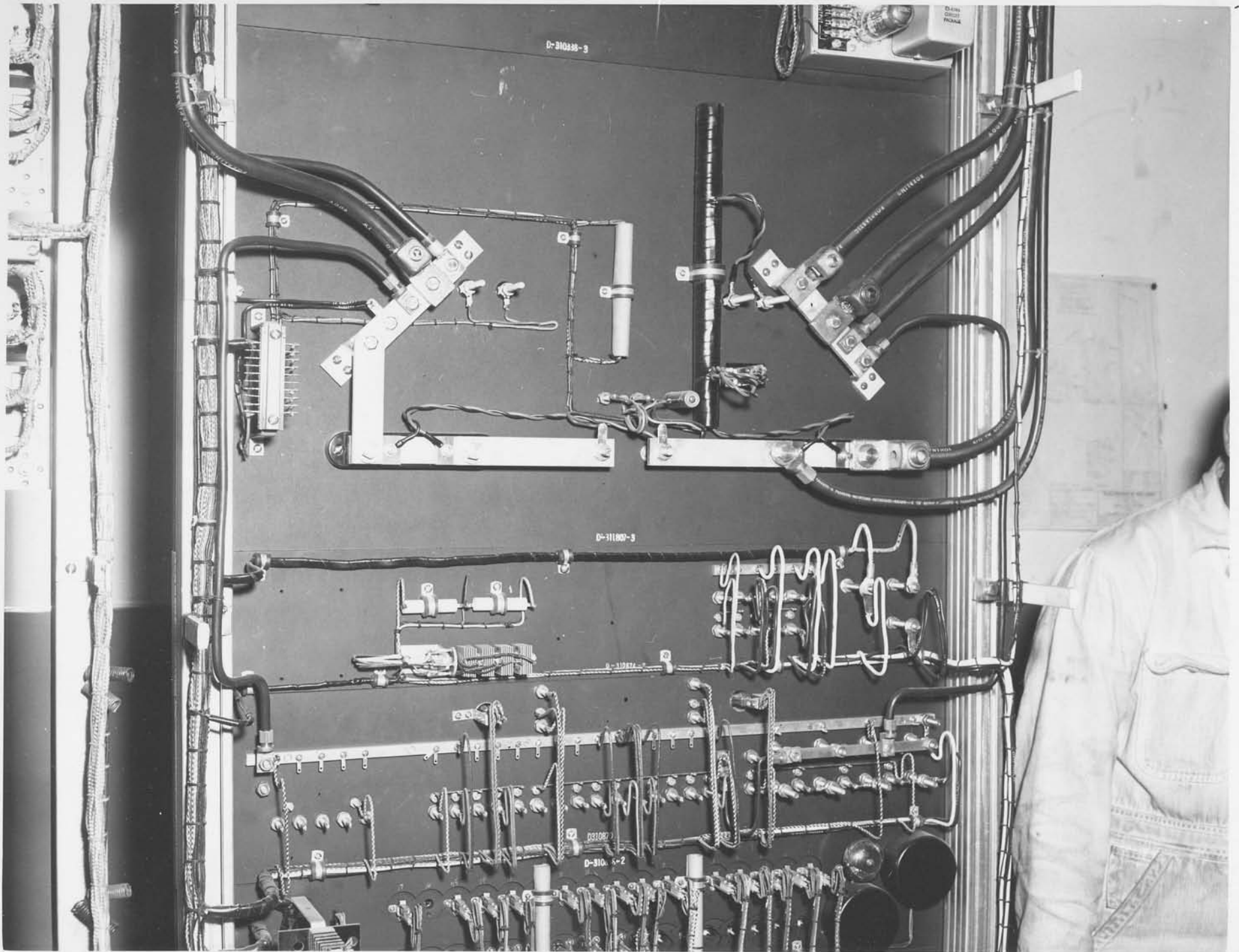
STROMBERG-CARLSON SIGNAL CORPS COMMON BATTERY SWITCHBOARD  
EDWARDS AIR FORCE BASE, DOUGLAS AIRCRAFT 1955



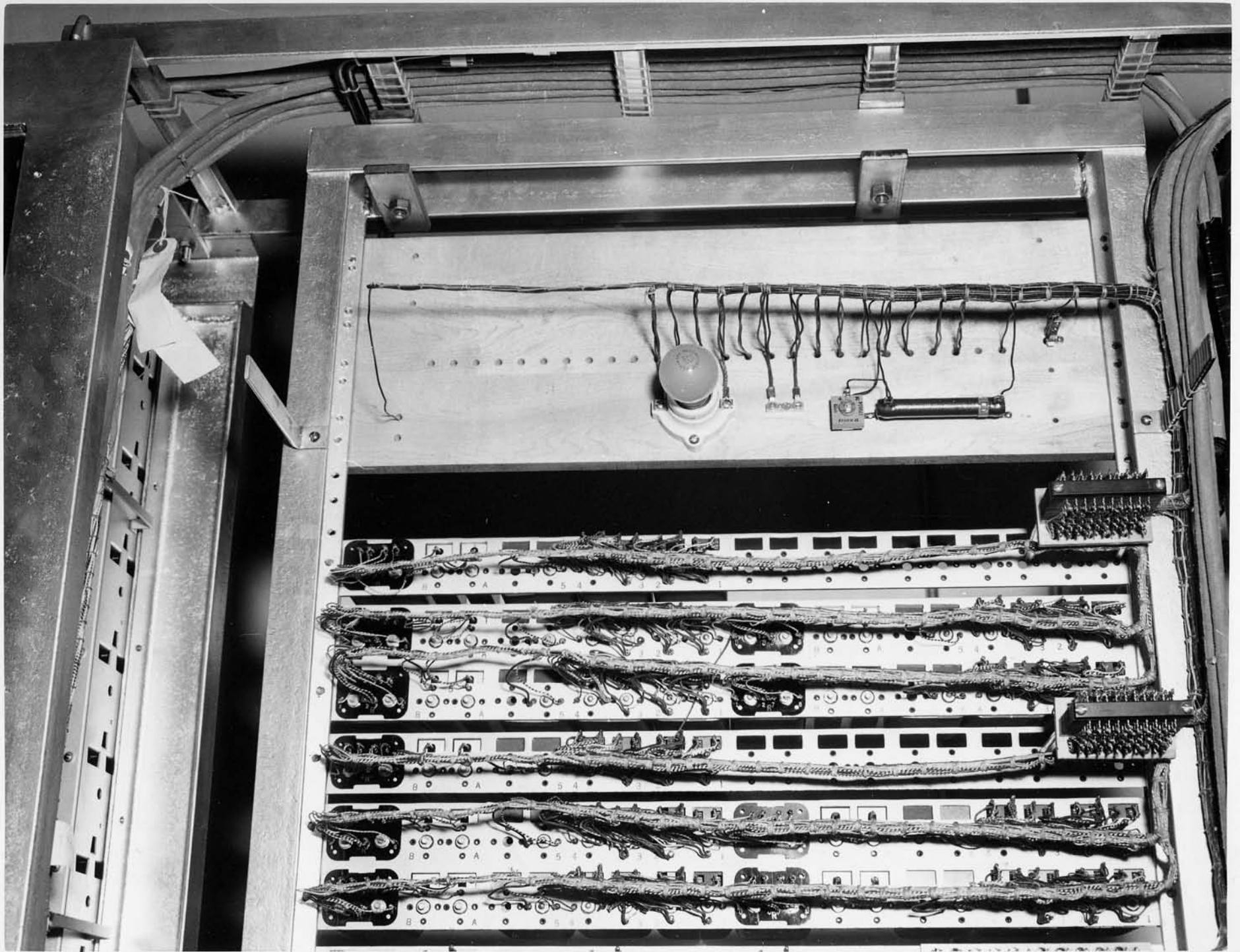
KELLOGG X-BAR SWITCHES, KELLOGG 7-2, X-BAR, EDWARDS AIR FORCE BASE, DOUGLAS AIRCRAFT, CA 1955



POWER BOARD, REAR VIEW, KELLOGG 7-2, X-BAR, EDWARDS AIR FORCE BASE,  
DOUGLAS AIRCRAFT, CA 1955



POWER BOARD, REAR VIEW, KELLOGG 7-2 X-BAR, EDWARDS AIR FORCE BASE, DOUGLAS AIRCRAFT, CA 1955



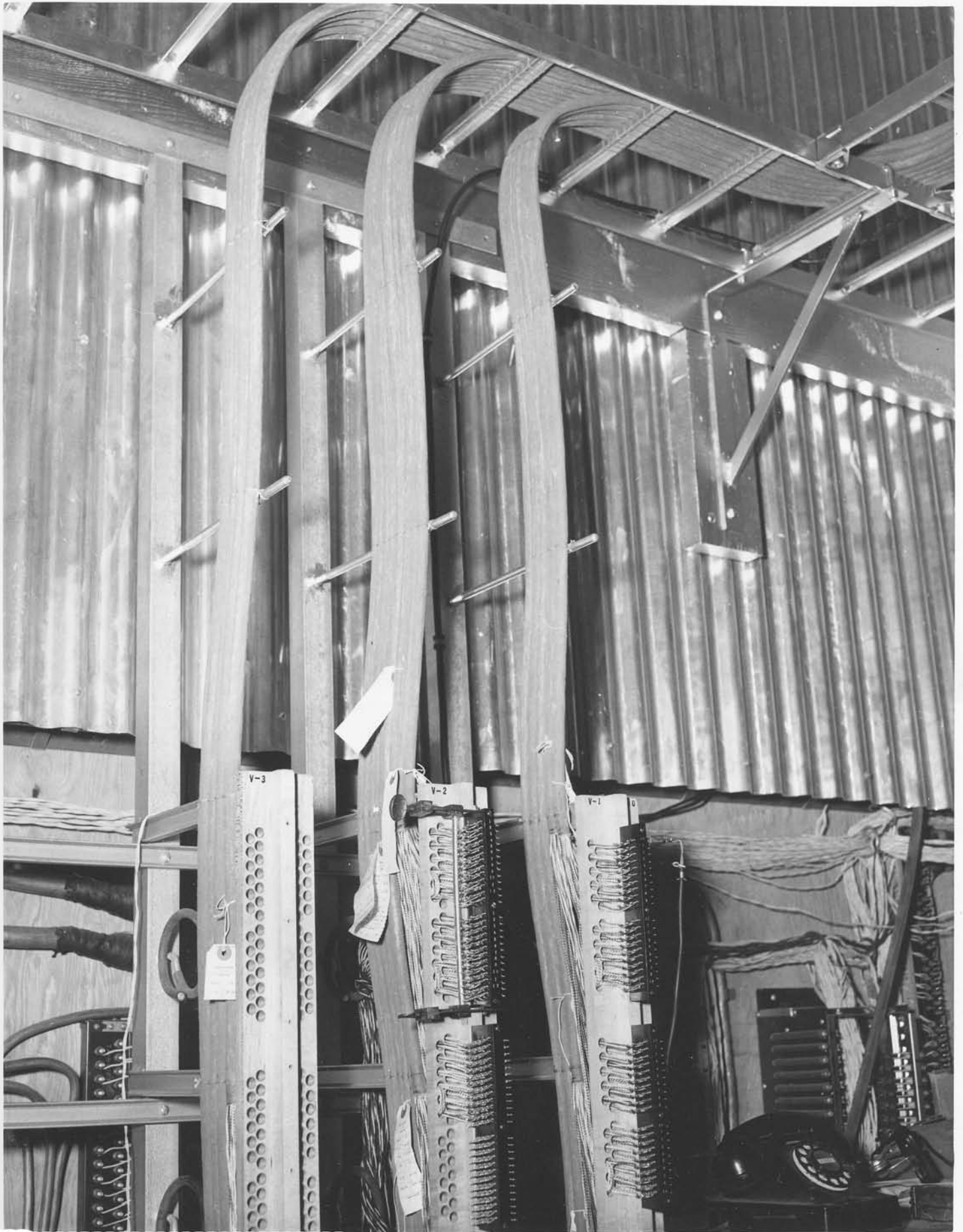
REAR VIEW RELAY RACK, WITH WIRING AND CABLE RUNS, KELLOGG 7-2 X-BAR,  
EDWARDS AIR FORCE BASE, DOUGLAS AIRCRAFT, CA 1955



CABLE RACKS WITH CABLES, KELLOGG 7-2 X-BAR, EDWARDS AIR FORCE BASE, DOUGLAS AIRCRAFT, CA 1955



CABLE RACK WITH SEWED CABLES, ODIS LEVRIER TESTING KELLOGG 7-2, X-BAR,  
EDWARDS AIR FORCE BASE, DOUGLAS AIRCRAFT, CA 1955



IDF, CABLE RUNS, KELLOGG 7-2 X-BAR, EDWARDS AIR FORCE BASE  
DOUGLAS AIRCRAFT, CA 1955



# KELLOGG SWITCHBOARD & SUPPLY CO.

6650 S. CICERO AVE. CHICAGO 38, ILL.  
TEL. PORTSMOUTH 6900

Odis W. LeVrier

EMPLOYEE'S NAME

93-167

CLOCK NO.

2-27-56

DATE ISSUED

756-34-0567

SOCIAL SECURITY NO.

*Odis W. LeVrier*

EMPLOYEE'S SIGNATURE

*W. LeVrier*  
PERSONNEL MANAGER

## NOTICE

EMPLOYEES ARE REQUIRED TO SHOW THIS PASS TO THE  
GUARD UPON ENTERING THE PLANT AND OFFICES.

LENDING PASS TO ANOTHER PERSON IS PROHIBITED  
AND IS CAUSE FOR DISMISSAL.



Odus LeVrier

TESTING 200 COMMON BATTERY LINE ADDITION PLUS ADDING TWO POSITIONS TO KELLOGG TOLL SWITCHBOARDS, CITIZENS UTILITIES, KINGMAN, AZ 1956



Odis LeVrier

TESTING 200 COMMON BATTERY LINE ADDITION PLUS  
ADDING TWO POSITIONS TO KELLOGG TOLL SWITCHBOARDS.  
CITIZENS UTILITIES, KINGMAN AZ 1956